

Country Update:Malaysia

P3W6 : Workshop on Metadata
Database Management

CCOP Geo-information Metadata
System (GIMS)

courage to pursue a new path and direction

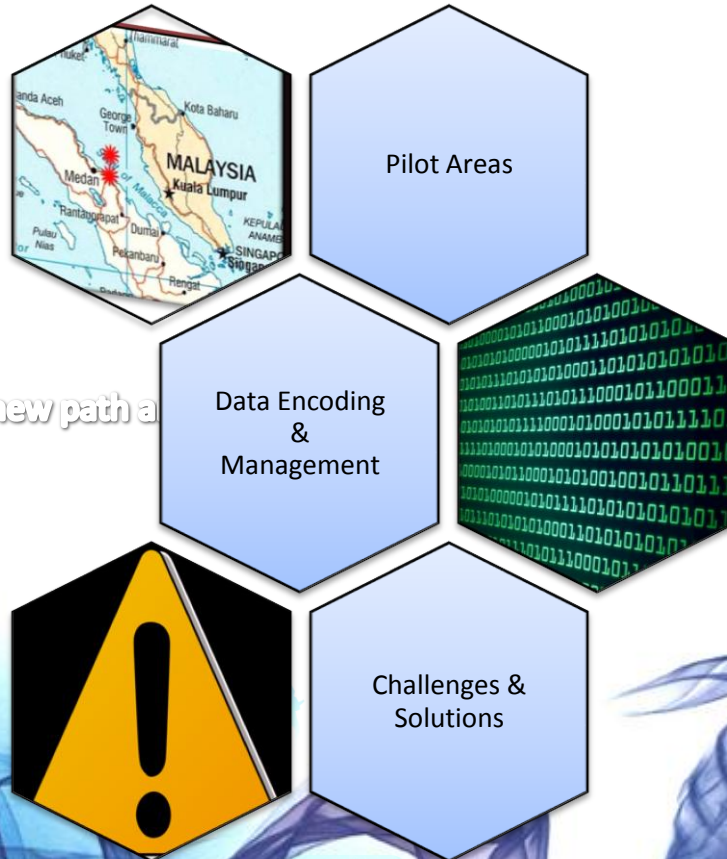
Reimagining Energy™

By Norzilah Jaffar



All rights reserved. No part of this document may be reproduced, stored in a retrieval system or transmitted in any form or by any means (electronic, mechanical, photocopying, recording or otherwise) without the permission of the copyright owner.

Status of GIMS use...



courage to pursue a new path a

Reimagining Energy™

What has happened...

TASK:

- to use the CCOP-GIMS system to upload metadata information
- Each country to identify pilot area for pilot implementation
 - PETRONAS – Straits on Melaka technical data
 - Geological dept – geological maps of Malaysia

STATUS:

- PETRONAS & Geological Department Malaysia identified about 250 geological maps and technical reports titles from pilot area
- > 5 Data Management personnel involved
- Standardized naming convention before loading
- Loaded and published
 - 120 report titles from Straits of Melaka
 - 140 Malaysia Geological maps

PETRONAS Pilot area: data from Straits of Malacca (near Mergui basin)



Samples of metadata loaded in CCOPGIMS

CCOPGIMS [Last Updated](#) [Full Text Search](#) [Advanced Search](#) [Map Search](#) [About](#)

Search: [Advanced Search](#)

Result List:

- [MYS Selat Melaka Recommendation](#)
Recommendation, location and justification of Carigali Exron 1 Selat Melaka Japanese
- [MYS Selat Melaka Petrolog](#)
This report is concerned with the carbonate and Environmental Interpretation of Well Technical ... [Text View](#)
- [MYS Selat Melaka Micro](#)
MSS-XA was drilled in Block PM1, to a depth of MSS-XA Micropalaeontological Analysis J.P. Rexi... [Text View](#)
- [MYS Selat Melaka Log A](#)
MG-XA penetrated the following formation 1984-02-17 Log Analysis- Seurula Form
- [MYS Selat Melaka Final](#)
Project 518 was a Shoran positioned and 1974-06-01 1974-06-01 Final Report Offshore UTF8 ... [Text View](#)
- [MYS Selat Melaka Final](#)
Geological Summary which covers structural Geological summary 1 Selat Melaka Japanese

CCOPGIMS [Last Updated](#) [Full Text Search](#) [Advanced Search](#) [Map Search](#) [About](#)

Search: [Advanced Search](#)

Result List:

- [geomap078](#)
The data is Geological map of Gunung Benom. The edition is 1st Edition, and belong to the series Geological map 1:63,360, Malaysia. It was responsible by Minerals and Geoscience Department Malaysia the access constraints is No restriction of access for hardcopy and digital data is for registered member only. The approval of Director General Minerals and Geoscience Malaysia is necessary before this map or any portion thereof may be copied or used. However, consent to copy the topographical base m... [Text View](#)
- [geomap156](#)
The data is Geological map of Tapah (sheet 2N/14). The edition is 1st Edition, and belong to the series Geological map 1:63,360, Malaysia. It was responsible by Minerals and Geoscience Department Malaysia the access constraints is No restriction of access for hardcopy and digital data is for registered member only. The approval of Director General Minerals and Geoscience Malaysia is necessary before this map or any portion thereof may be copied or used. However, consent to copy the topographical... [Text View](#)
- [geomap025](#)
The data is Geological map of Kampong Buloh. The edition is 1st Edition, and belong to the series Geological map 1:63,360, Malaysia. It was responsible by Minerals and Geoscience Department Malaysia the access constraints is No restriction of access for hardcopy and digital data is for registered member only. The approval of Director General Minerals and Geoscience Department Malaysia the access constraints is No restriction of access for hardcopy and digital data is for registered member only. The approval of Director General Minerals and Geoscience Malaysia is necessary before this map or any portion thereof may be copied or used. However, consent to copy the topographical base ... [Text View](#)
- [geomap063](#)
The data is Geological map of Lumut. The edition is 1st Edition, and belong to the series Geological map 1:63,360, Malaysia. It was responsible by Minerals and Geoscience Department Malaysia the access constraints is No restriction of access for hardcopy and digital data is for registered member only. The approval of Director General Minerals and Geoscience Malaysia is necessary before this map or any portion thereof may be copied or used. However, consent to copy the map shou... [Text View](#)
- [geomap082](#)
The data is Geological map of Sungai Lembing. The edition is 1st Edition, and belong to the series Geological map 1:63,360, Malaysia. It was responsible by Minerals and Geoscience Department Malaysia the access constraints is No restriction of access for hardcopy and digital data is for registered member only. The approval of Director General Minerals and Geoscience Malaysia is necessary before this map or any portion thereof may be copied or used. However, consent to copy the topographical ba... [Text View](#)
- [geomap130](#)
The data is Geological map of Sungai Lembing. The edition is 1st Edition, and belong to the series Geological map 1:63,360, Malaysia. It was responsible by Minerals and Geoscience Department Malaysia the access constraints is No restriction of access for hardcopy and digital data is for registered member only. The approval of Director General Minerals and Geoscience Malaysia is necessary before this map or any portion thereof may be copied or used. However, consent to copy the topographical ba... [Text View](#)

CCOPGIMS [Last Updated](#) [Full Text Search](#) [Advanced Search](#) [Map Search](#) [About](#)

Search: [Advanced Search](#)

Result List: 263 found

CCOPGIMS [Last Updated](#) [Full Text Search](#) [Advanced Search](#) [Map Search](#) [About](#)

Search: [Advanced Search](#)

Copyright © 2006

All rights reserved. No part of this document may be reproduced, stored in a retrieval system or transmitted in any form or by any means (electronic, mechanical, photocopying, recording, or otherwise) without the prior written permission of the copyright owner.

Challenges & Lessons Learnt

Challenges

- Manpower – to identify dedicated people to do it
- Process – be very clear on the steps to do it
- Tools – develop short cut to speed up work :
uploading tools by Mr. Viet

Lessons Learnt:

- Must have clear understanding of the overall system before applying the usage
- The overall process of developing, reviewing, understanding and using the system makes us realized the real value of implementing metadata system for sharing and easy retrieval
- Practice makes perfect

Way Forward

Take Away:

The learning from CCOP GIMS is much used during development of Technical reports/maps/images/cores metadata system for PETRONAS National Data Repository(NDR)

Implementation:

Currently reviewing metadata elements for technical reports/maps/images to be incorporated into new EDMS system. Involved migrating metadata information of 50K reports titles.

Making use of the data loaded in GIMS for future opportunities between member countries

TERIMA KASIH

courage to pursue a new path and direction

Reimagining Energy™

All rights reserved. No part of this document may be reproduced, stored in a retrieval system or transmitted in any form or by any means (electronic, mechanical, photocopying, recording or otherwise) without the permission of the copyright owner.